

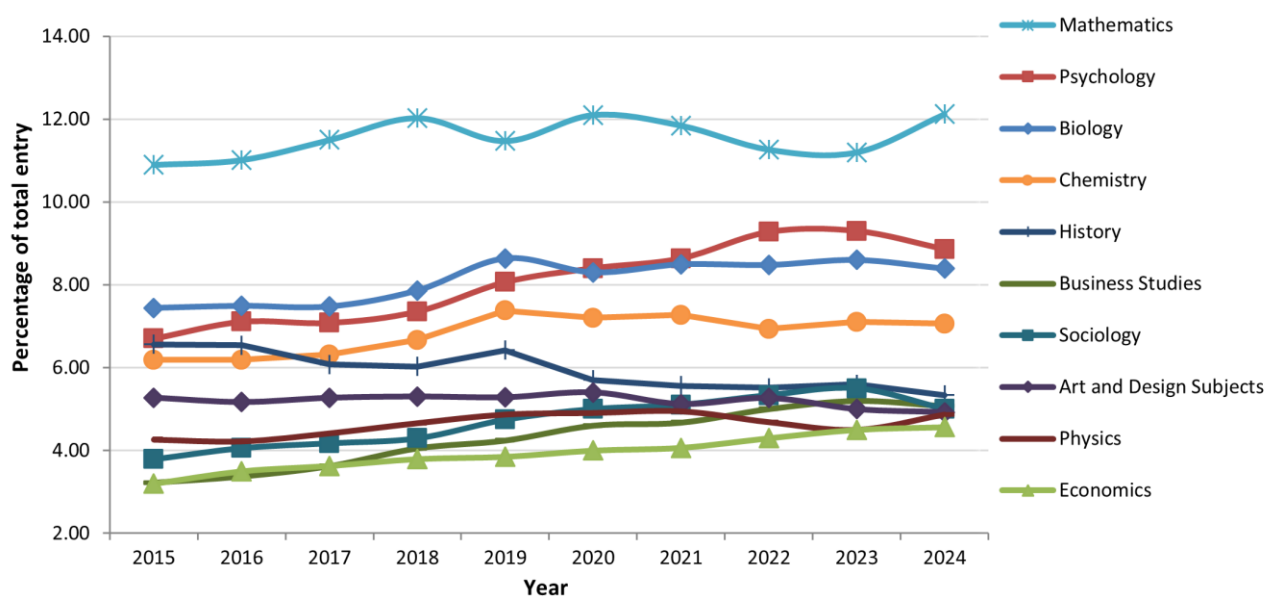
## A level trends – Summer 2024, UK

Table 1 Top GCE A-level subjects in 2024 by entry

Ranking	Subject	% of total	Number of Entries
1 (1)	Mathematics	12.1	107,427
2 (2)	Psychology	8.9	78,556
3 (3)	Biology	8.4	74,367
4 (4)	Chemistry	7.1	62,583
5 (5)	History	5.3	47,297
6 (7)	Business Studies	5.1	44,961
7 (6)	Sociology	5.0	44,359
8 (8)	Art and Design Subjects	4.9	43,668
9 (10)	Physics	4.9	43,114
10 (9)	Economics	4.6	40,451

(2023 ranking in brackets)

Figure 1 Top ten GCE A level subjects as a percentage of the total entry over the period 2015 to 2024

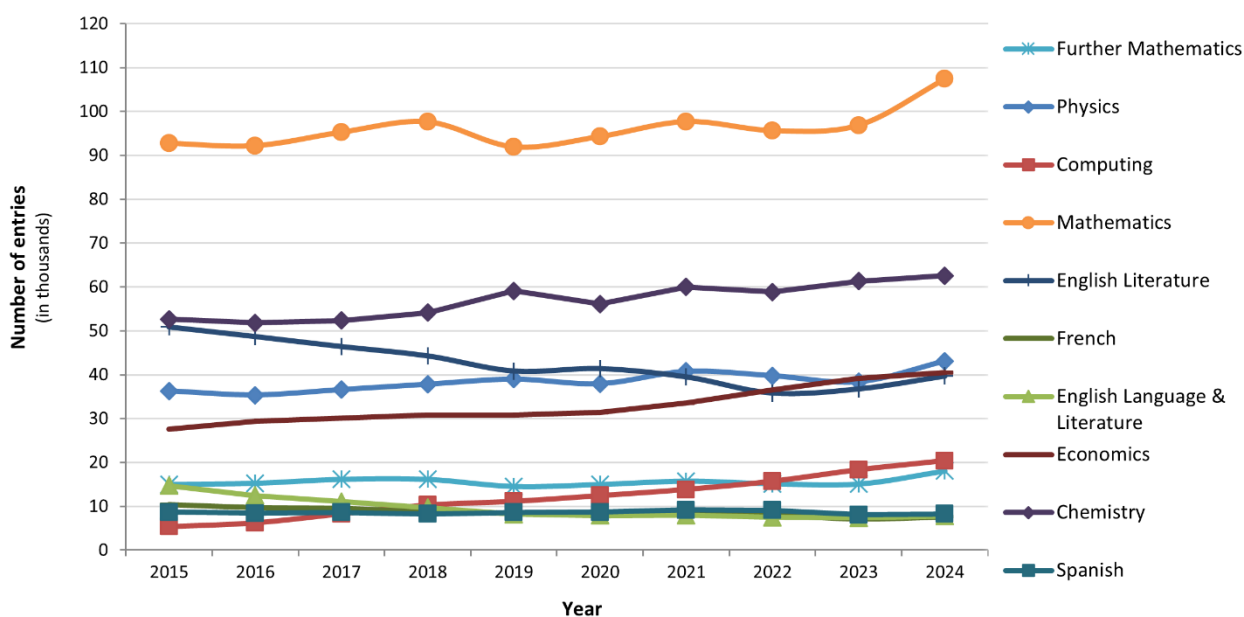


**Table 2 Top GCE A level subject increases (changes from 2023-2024)**

Ranking	Subject	% Change	2023 Number of Entries	2024 Number of Entries
1	Further Mathematics	19.9	15,080	18,082
2	Physics	12.3	38,379	43,114
3 (1)	Computing	11.3	18,306	20,370
4 (15)	Mathematics	10.9	96,853	107,427
5 (10)	English Literature	8.0	36,743	39,673
6	French	6.8	7,063	7,544
7	English Language & Literature	5.7	7,352	7,773
8 (4)	Economics	3.3	39,141	40,451
9 (7)	Chemistry	2.1	61,284	62,583
10	Spanish	1.6	8,110	8,238

(2023 ranking in brackets. Subjects over 5000 entries shown. Subjects having a year-on-year decrease in 2023 are shown as blank.)

**Figure 2 Top GCE A level subject increases, 2024**



**Table 3 GCE A level subject decreases (changes from 2023-2024)**

Ranking	Subject	% Change	2023 Number of Entries	2024 Number of Entries
1	Sociology	-6.5	47,436	44,359
2 (3)	Drama	-5.9	9,200	8,654
3	Geography	-5.1	38,264	36,314
4	Psychology	-2.4	80,493	78,556
5	History	-2.2	48,378	47,297
6 (7)	Religious Studies	-1.4	16,853	16,622
7	Physical Education	-1.3	13,658	13,475
8	Political Studies	-1.1	22,163	21,926
9 (4)	English Language	-1.0	13,394	13,260
10	Media / Film / TV Studies	-0.9	23,193	22,990

(2023 ranking in brackets. Subjects over 5000 entries shown. Subjects having a year-on-year increase in 2023 are shown as blank.)

**Figure 3 Top GCE A level subject decreases, 2024**

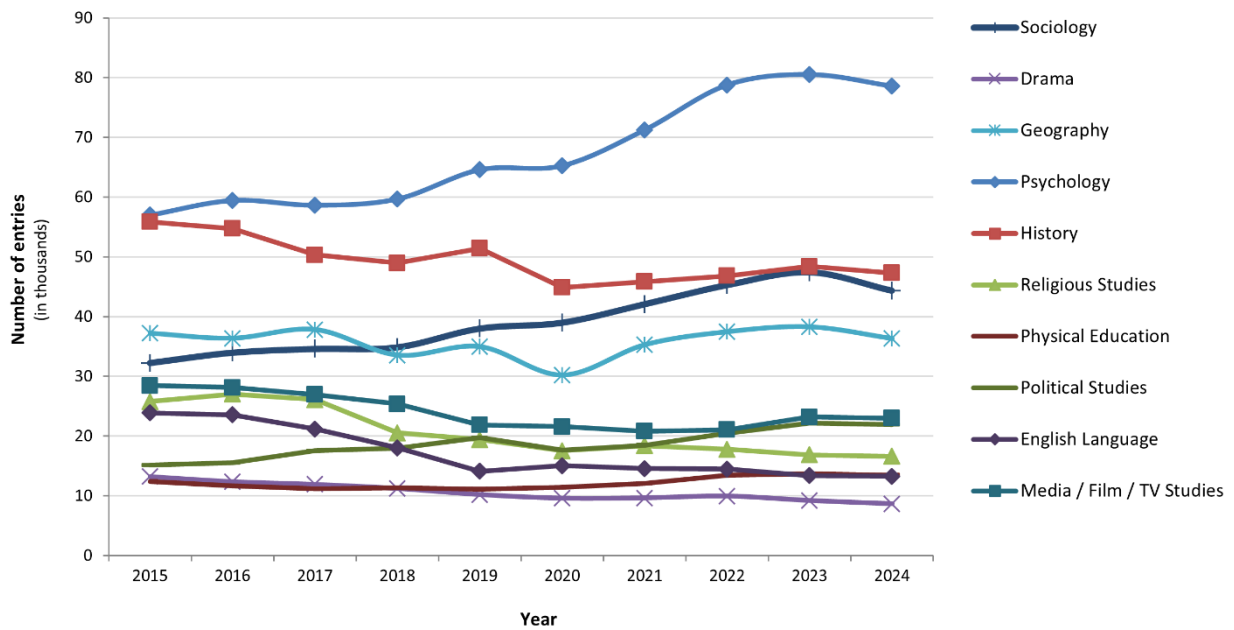


Figure 4 GCE A level sciences, 2015-2024

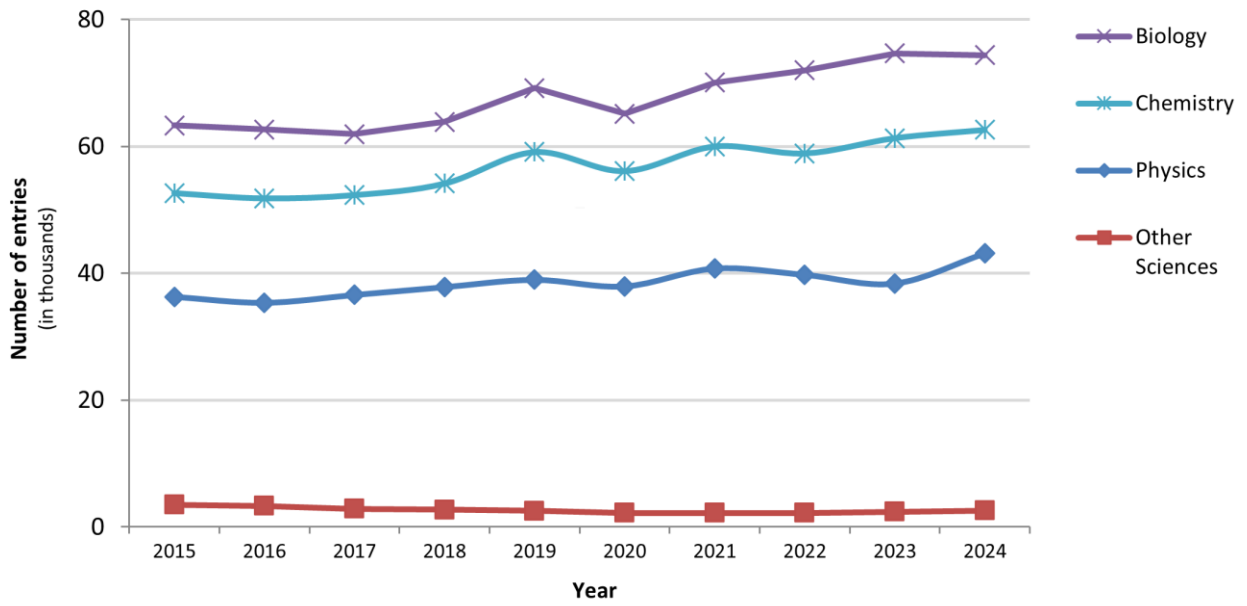
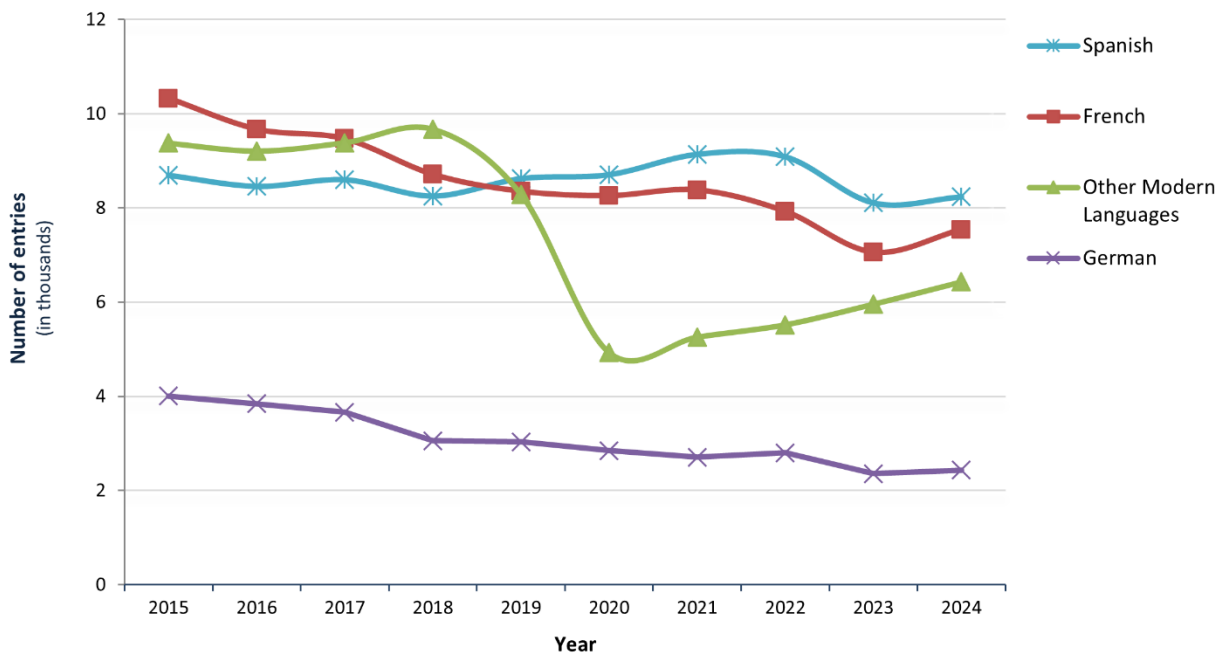


Figure 5 GCE A level languages, 2015-2024



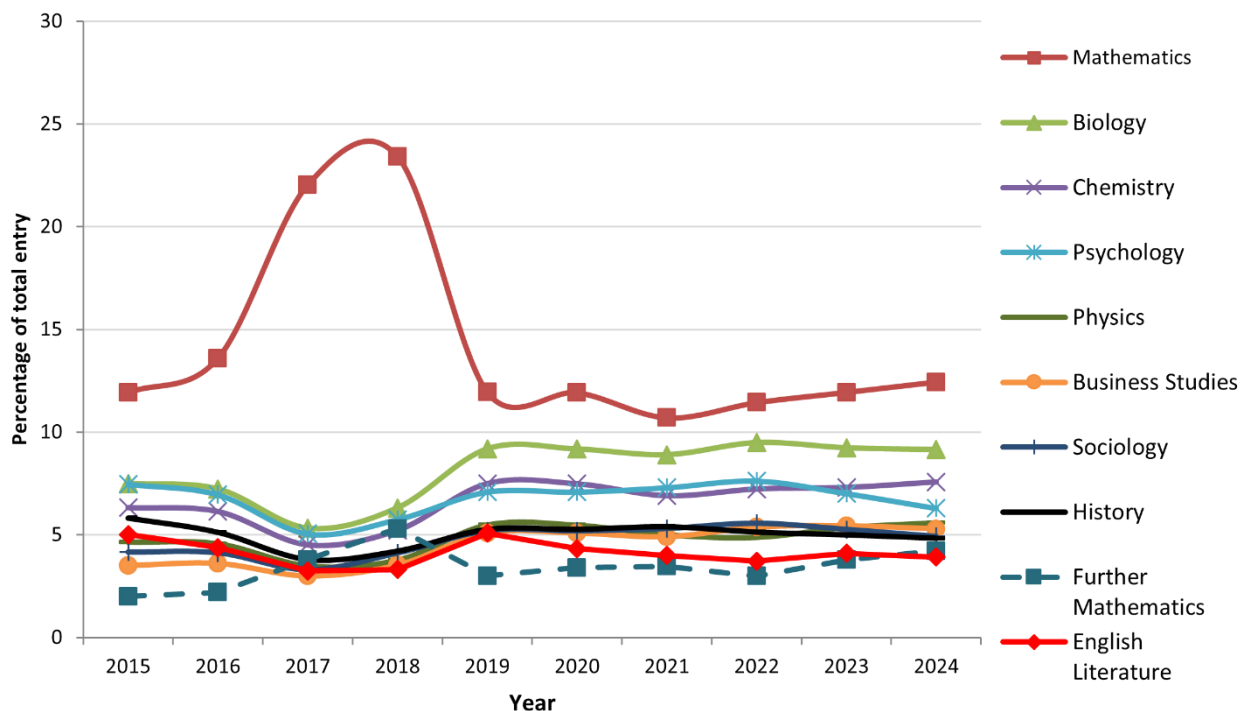
# AS level trends – Summer 2024, UK

Table 4 Top GCE AS level subjects in 2024

Ranking	Subject	% of total	Number of Entries
1 (1)	Mathematics	12.4	17,454
2 (2)	Biology	9.1	12,833
3 (3)	Chemistry	7.6	10,621
4 (4)	Psychology	6.3	8,827
5 (6)	Physics	5.6	7,845
6 (5)	Business Studies	5.3	7,414
7 (7)	Sociology	4.9	6,900
8 (8)	History	4.8	6,785
9 10)	Further Mathematics	4.2	5,927
10 (9)	English Literature	3.9	5,489

(2023 ranking in brackets)

Figure 6 Top ten AS level subjects as a percentage of the total entry over the period 2015 to 2024

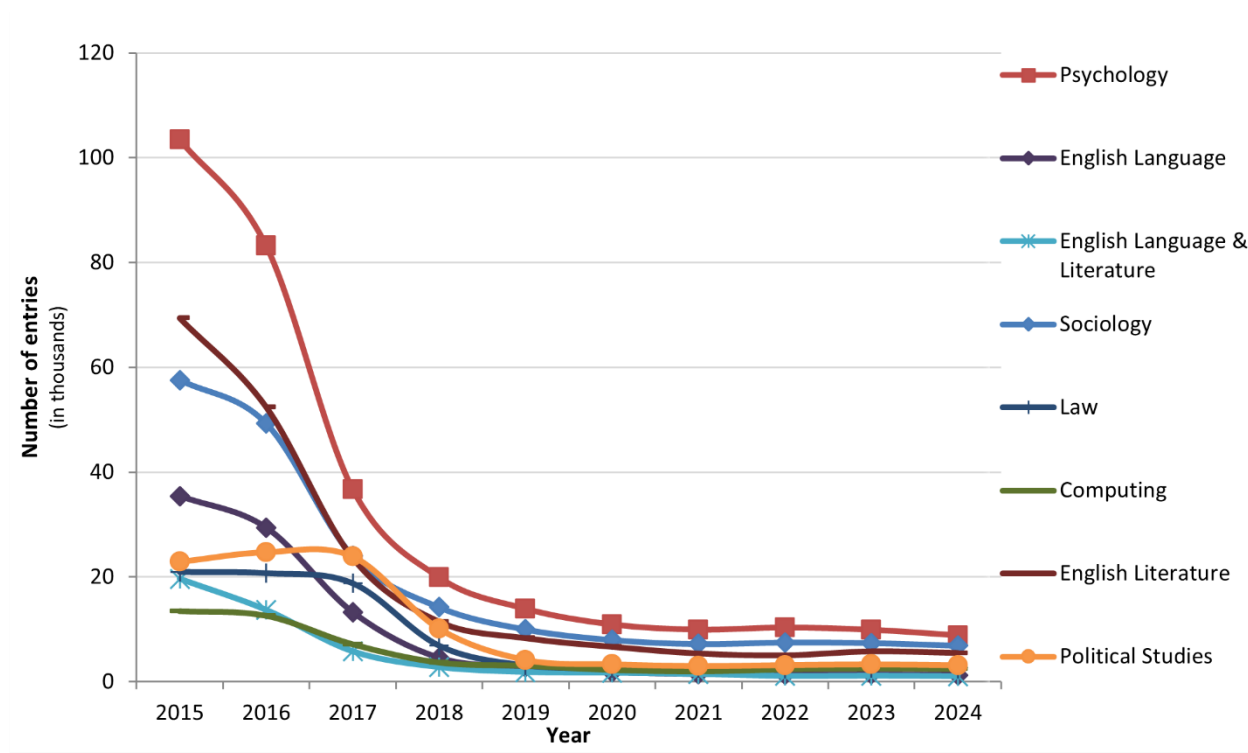


**Table 5 GCE AS level subject decreases (changes from 2023-2024)**

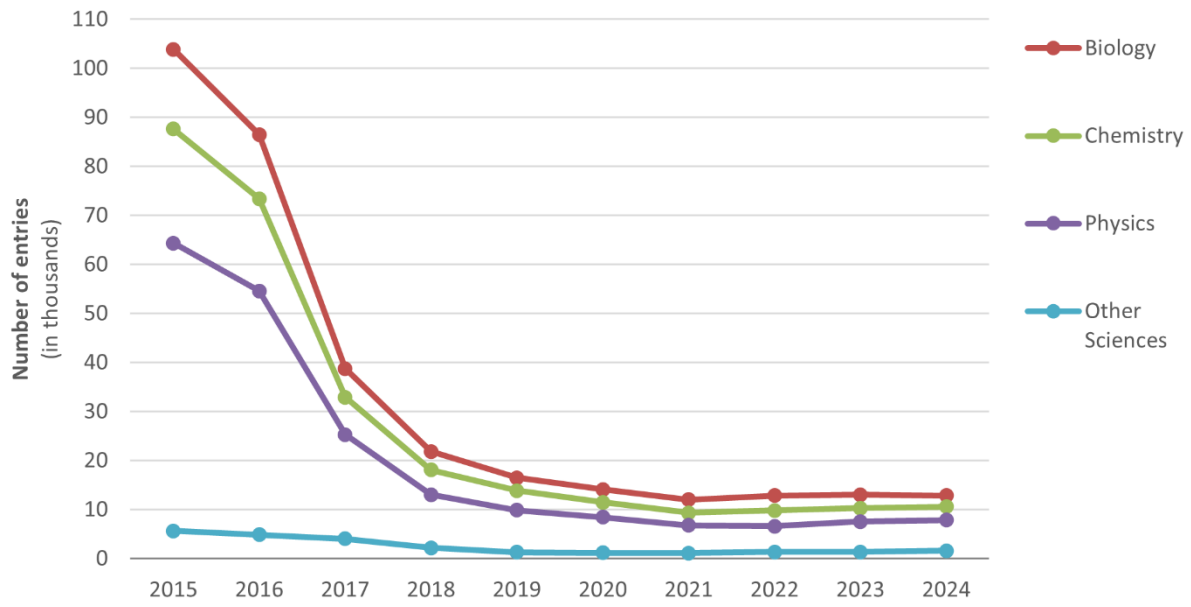
Ranking		Subject	% change	2023 Number of Entries	2024 Number of Entries
1	(3)	Psychology	-10.8	9,891	8,827
2		English Language	-8.6	1,412	1,291
3		English Language & Literature	-7.4	1,142	1,057
4	(5)	Sociology	-7.0	7,416	6,900
5		Law	-5.6	2,578	2,433
6		Computing	-5.4	2,594	2,453
7		English Literature	-5.3	5,797	5,489
8		Political Studies	-5.1	3,308	3,139

(2023 ranking in brackets. Subjects over 1000 entries shown. Subjects having a year-on-year increase in 2023 are shown as blank.)

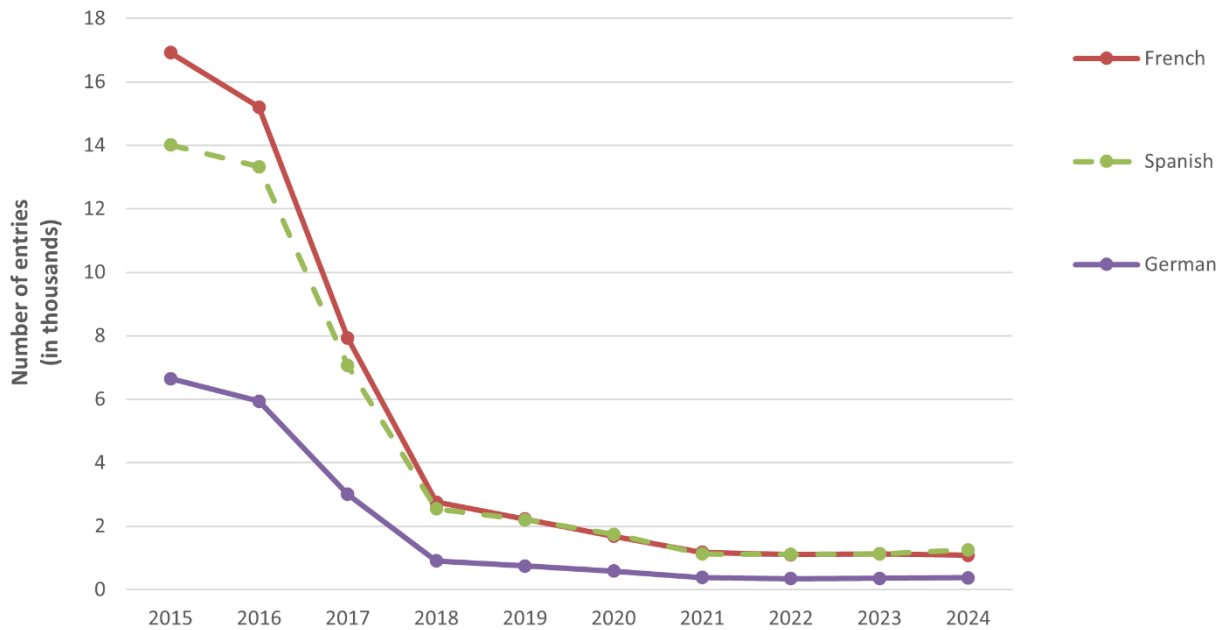
**Figure 7 GCE AS level subject decreases, 2024**



**Figure 8 GCE AS level sciences, 2015-2024**



**Figure 9 GCE AS level languages, 2015-2024**



## Level 3 Extended Project trend

Table 6 Changes from 2023-2024

<b>Subject</b>	<b>% change</b>	<b>2023 Number of Entries</b>	<b>2024 Number of Entries</b>
Extended Project	2.7%	37,110	36,114

## AEA trend

Table 7 Changes from 2023-2024

<b>Subject</b>	<b>% change</b>	<b>2023 Number of Entries</b>	<b>2024 Number of Entries</b>
AEA Mathematics	17.9	319	376